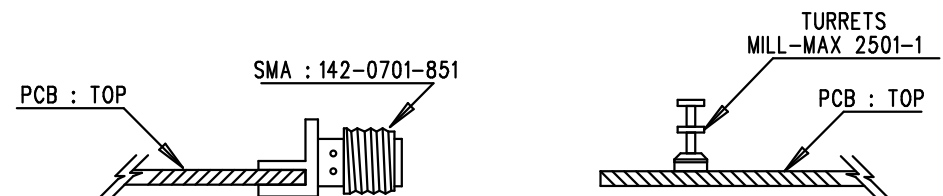

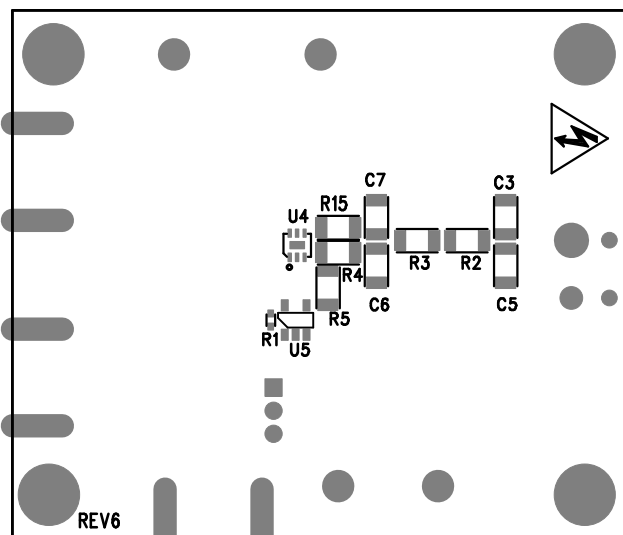


NOTES: UNLESS OTHERWISE SPECIFIED


1. WORKMANSHIP SHALL BE IN ACCORDANCE WITH IPC-A-610.
2. ASSEMBLY PROCESS SHALL INCLUDE: REFLOW SOLDER TOP SIDE SMD. MAXIMUM SOLDER TEMPERATURE IS 240 DEGREES CELSIUS.
3. PARTS TO OMIT WILL BE SPECIFIED ON THE BILL OF MATERIALS. LOCATIONS OF OMITTED PARTS SHALL BE FREE OF SOLDER. MASK THE SOLDER STENCIL WHERE SMT PARTS ARE OMITTED.
4. INSTALL SHUNT AS SHOWN
5. DEPANELIZE BOARDS AFTER ASSEMBLY AND ROUTE-OUT THE BREAKOUT TABS ON FOUR SIDES OF THE BOARD EDGE.
6. DO NOT APPLY ANY KIND OF ASSEMBLY STAMP OR QA STAMP TO ANY BOARD.
7. INSTALL SMA CONNECTORS AND TURRETS AS SHOWN BELOW:



APPROVALS		 <div> 1630 MCCARTHY BLVD MILPITAS, CA 95035 PH: (408)432-1900 www.linear.com LTC CONFIDENTIAL- FOR CUSTOMER USE ONLY </div>		
PCB DES.	AK.			
APP ENG.	NOE Q.	TITLE: TOP ASSEMBLY DRAWING		
		LTC6560 OPTICAL SINGLE CHANNEL RECEIVER		
		SIZE N/A	IC NO. LTC6560 DC2803A	REV. 6
SCALE = NONE		FILENAME: DC2803A-6.PCB		SHT 1 OF 1



DATE: 12-10-2018
 OPTICAL SINGLE CHANNEL RECEIVER
 DC2803A-6, LTC6560
 ANALOG DEVICES
 BOTTOM SILKSCREEN

APPROVALS		 LINEAR TECHNOLOGY 1630 MCCARTHY BLVD MILPITAS, CA 95035 PH: (408)432-1900 www.linear.com LTC CONFIDENTIAL- FOR CUSTOMER USE ONLY		
PCB DES.	AK			
APP ENG.	NOE Q.	TITLE: BOTTOM ASSEMBLY DRAWING LTC6560 OPTICAL SINGLE CHANNEL RECEIVER		
		SIZE	IC NO.	REV
		N/A	LTC6560 DC2803A	6
SCALE = NONE		FILENAME: DC2803A-6.PCB		SHT 2 of 2